

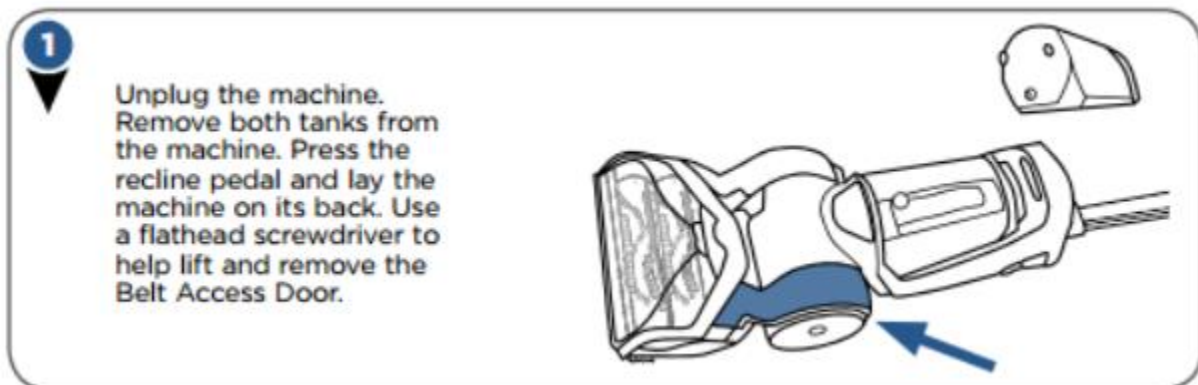
How do I change the belt on my Proheat 2X® Revolution™ Deep Cleaner?

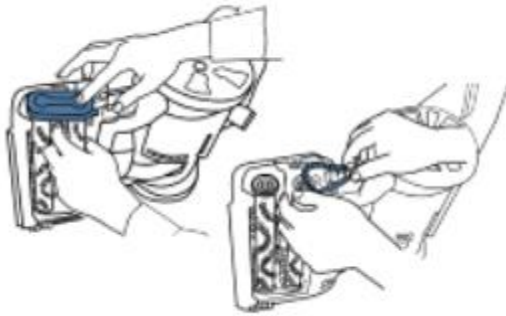
Answer:

[Watch The Video](#)

Use the following steps to change a belt on your Proheat 2X® Revolution™:

NOTE: You will need a Phillips and a Flathead Screwdriver. There are 3 belts on your machine: Flat Pump Belt, Large Cogged Pump Belt, & Small Cogged Brush Belt.

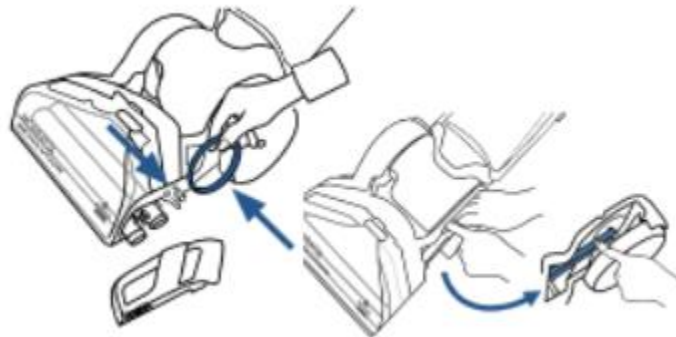


4

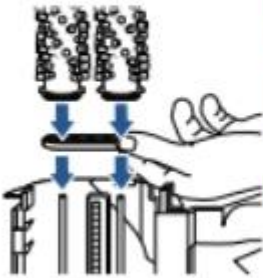
Remove the Brush Cover by lifting straight up. Remove the Cogged Large Pump Belt. The brush rolls can be replaced or cleaned at this time, if needed.

5

Now, if the Flat Pump Belt was broken, place a new Flat Pump Belt around the red area of the large pulley. Then use your thumb to stretch it toward the back of the machine and transfer it onto the metal axle.

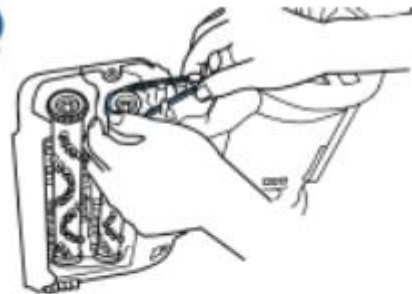
**6**

Spin either brush. If they both spin, continue to Step 7.

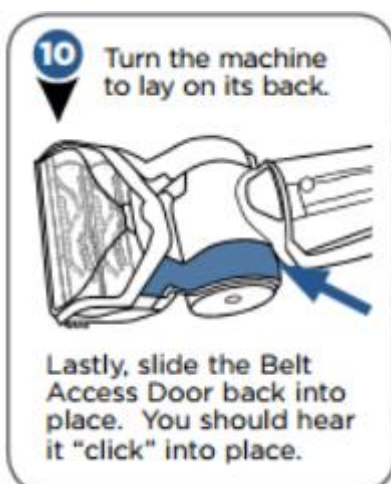


If only one spins, the opposite belt is broken and you must remove both brushes and replace the Small Cogged Brush Belt.

Place the new belt around both brush gears and slide them onto the thin metal axles.

7

To replace the Cogged Large Pump Belt, make sure your Revolution is completely reclined. Begin by wrapping the Cogged Large Pump Belt around the small metal-toothed pulley. While wrapped around the pulley, stretch and wrap around the nearest brush gear.



If you have trouble with any of the above steps, please [contact us](#) . A representative will be happy to assist you.