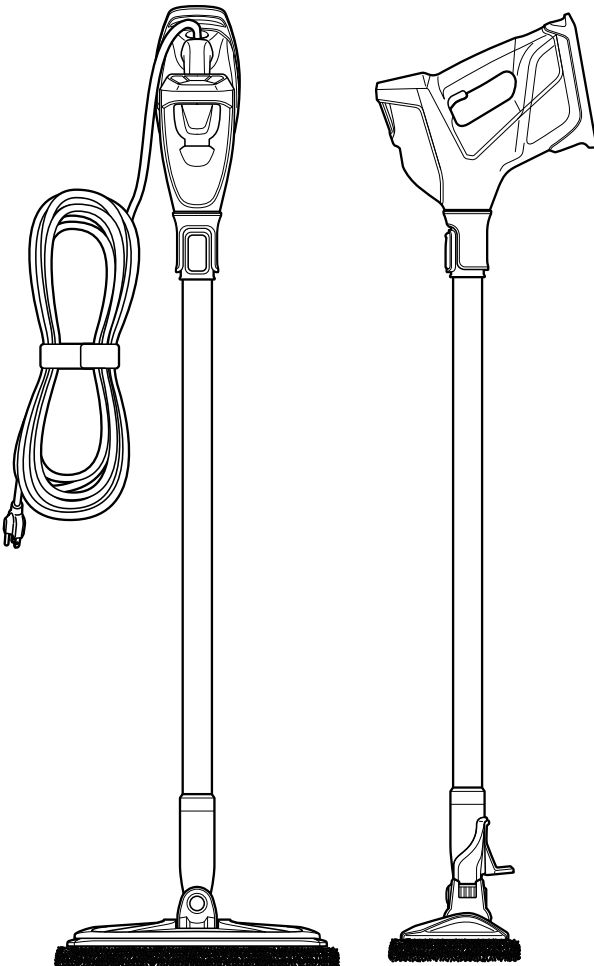


# Bissell®

**POWERFRESH™ SLIM  
STEAM MOP**  
MODEL 2233G



# IMPORTANT SAFETY INSTRUCTIONS

## READ ALL INSTRUCTIONS BEFORE USING YOUR APPLIANCE.

Unplug from outlet when not in use and before conducting maintenance. When using an electrical appliance, basic precautions should be observed, including the following:

### **WARNING**

#### **TO REDUCE THE RISK OF FIRE, ELECTRIC SHOCK OR INJURY:**

- » This appliance is not intended for use by persons (including children) with reduced physical, sensory or mental capabilities, or lack of experience and knowledge, unless they have been given supervision or instruction concerning use of the appliance by a person responsible for their safety.
- » Children should be supervised to ensure that they do not play with the appliance.
- » Keep hair, loose clothing, fingers, and all parts of body away from openings and moving parts of the appliance and its accessories.
- » Unplug from electrical socket when not in use, before cleaning, maintaining or servicing the appliance, and if your appliance has an accessory tool with a moving brush, before connecting or disconnecting the tool.
- » If the supply cord is damaged, it must be replaced by the manufacturer, its service agent, or similarly qualified person in order to avoid a hazard.
- » Do not run appliance over cord.
- » Plastic film can be dangerous. To avoid danger of suffocation, keep away from children.
- » Use only as described in this user guide.
- » Use only manufacturer's recommended attachments.
- » Do not immerse in water or liquid.
- » If appliance is not working as it should, has been dropped, damaged, left outdoors, or dropped into water; do not attempt to operate it and have it repaired at an authorized service center.
- » Do not put any object into openings.
- » Do not use with any opening blocked; keep free of dust, lint, hair, and anything that may reduce air flow.
- » Use extra care when cleaning on stairs.
- » Do not use to pick up flammable or combustible liquids, such as petroleum, or use in areas where they may be present.
- » Do not pick up toxic material (chlorine bleach, ammonia, drain cleaner, etc.).
- » Do not use appliance in an enclosed space filled with vapors given off by oil-based paint, paint thinner, some moth-proofing substances, flammable dust, or other explosive or toxic vapours.
- » Do not pick up hard or sharp objects such as glass, nails, screws, coins, etc.
- » Keep appliance on a level surface.
- » Do not pick up anything that is burning or smoking, such as cigarettes, matches or hot ashes.
- » If your appliance has a motorised brush roll, do not leave machine running in the same spot without the handle fully upright.
- » Do not leave appliance when plugged in.
- » Do not use with damaged cord or plug.
- » Do not pull or carry by cord, use cord as a handle, close door on cord, or pull cord around sharp edges or corners.
- » Keep cord away from heated surfaces.
- » To unplug, grasp the plug, not the cord.
- » Do not handle plug or appliance with wet hands.
- » Turn OFF all controls before unplugging.
- » Hold plug when rewinding onto cord reel. Do not allow plug to whip when rewinding.
- » Do not use outdoors or on wet surfaces.
- » Always connect to a properly earthed electrical socket.
- » The appliance is not to be used if it has been dropped, if there are visible signs of damage or if it is leaking.
- » Keep the appliance out of reach of children when it is energized or cooling down.
- » The foot surfaces are liable to get hot during use.
- » Do not direct steam at people, animals, or equipment containing electrical components.
- » Do not use on leather, wax polished furniture or floors, synthetic fabrics, velvet or other delicate, steam-sensitive materials.
- » Always turn OFF vacuum mode if you encounter liquid on the floor.
- » Do not leave the appliance unattended while it is connected to the supply mains.
- » Do not open the filling aperture during use.

### **WARNING**

**SURFACE MAY BE HOT. AVOID CONTACT.**



**THIS SYMBOL MEANS  
WARNING: DANGER OF SCALDING**

## SAVE THESE INSTRUCTIONS

**FOR OPERATION ON A 220-240 VOLT A.C. 50-60 HZ POWER SUPPLY ONLY.**

This model is for household use only.

# Thanks for buying a BISSELL® steam mop

We love to clean and we're excited to share one of our innovative products with you. We want your steam mop to work like new for the years to come, so this guide has tips on how to use, maintain and, if there's a problem, troubleshoot.

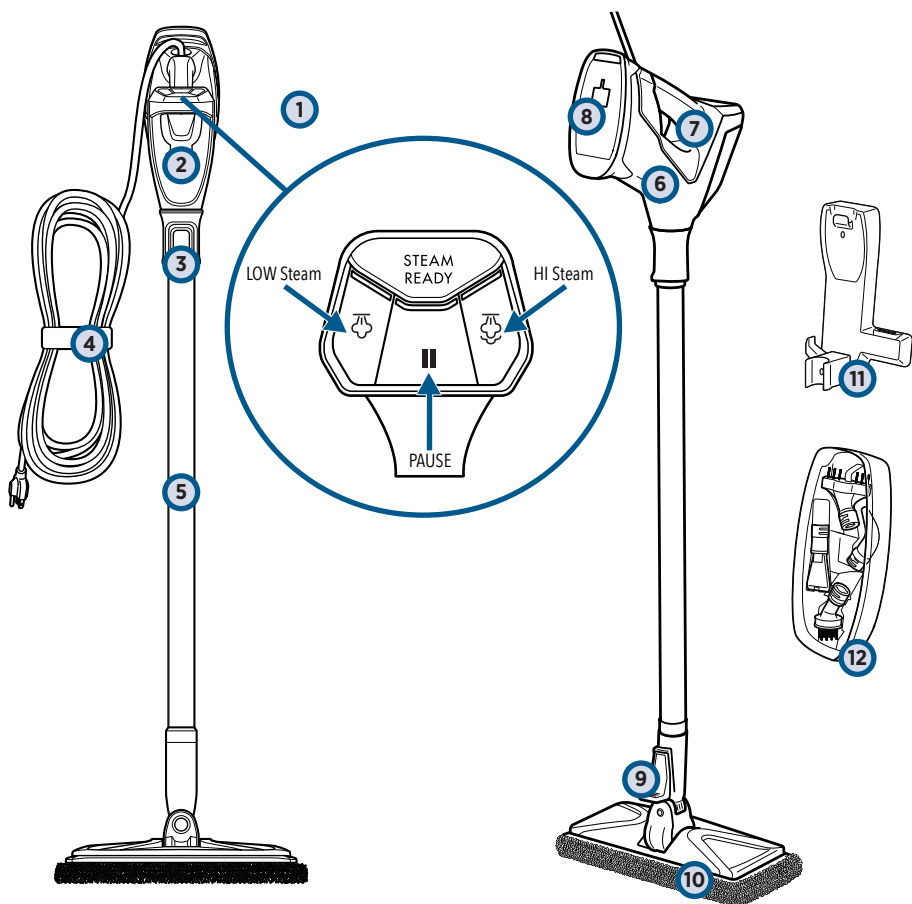
Your steam mop needs a little assembly before getting to work, so flip to the "Assembly" section and let's get started!

Safety Instructions.....2	Maintenance & Care ..... 11-13
Product View.....4	Troubleshooting ..... 14
Assembly .....5	Warranty..... 15
Operations .....6-10	Service..... 15

## What's In The Box?

					
Handheld Pod	Wall Mount & Screws	Mop Pad Foot	White Mop Pad	Scrubby Mop Pad	Water Cup
					
Extension Wand	Tool Box with Tools	Green Bristle Brush (in toolbox)	Grout Tool (in toolbox)	Flat Scraper Tool (in toolbox)	Angle Concentrator Tool (in toolbox)
					
Window Squeegee	Flat Surface Tool	Flat Surface Mop Pad	Fabric Steamer and Cloth	Tool Bag	

# Product View



- |   |                             |    |                              |
|---|-----------------------------|----|------------------------------|
| 1 | SmartSet Steam Control      | 7  | Steam Trigger                |
| 2 | Easy Fill Water Tank        | 8  | Wall Mount Storage Clip Area |
| 3 | Handheld Pod Release Button | 9  | Extension Wand Release Pedal |
| 4 | Power Cable with Wrap Strap | 10 | Mop Pad Foot                 |
| 5 | Extension Wand              | 11 | Wall Mount                   |
| 6 | Handheld Pod                | 12 | Tool Box                     |

**NOTE:** Tool Box stores Green Bristle Brush, Angle Concentrator Tool, Grout Tool, and Flat Scraper Tool.

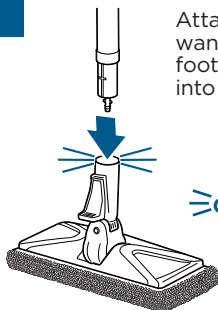


# Assembly

## ⚠️ WARNING

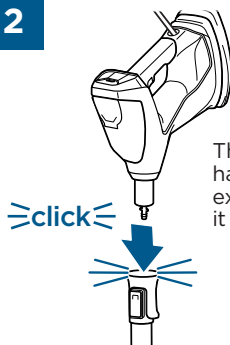
Do not plug in your steam mop until you are familiar with all instructions and operating procedures.

1



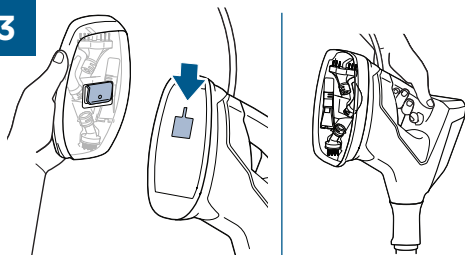
Attach the extension wand to the mop pad foot by snapping it into place.

2



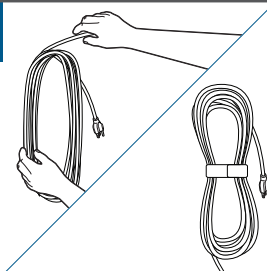
Then, insert the handheld pod to the extension wand until it clicks into place.

3



Attach the tool box to the handheld pod by aligning the clip on the back of the box with the opening on the bottom of the pod. Slide the pod into place.

4



Wrap the cable around the palm of your hand into a circle. Then, place the wrap strap around the cable and back onto itself to secure.

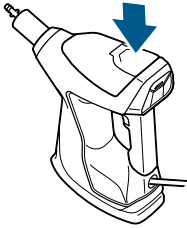
**NOTE:** For instructions on attaching the wall mount and Storage, please refer to page 12.

## ⚠️ WARNING

Never put descaling aromatic, alcoholic or detergent products into the steam cleaner, as this may damage it or make it unsafe for use. Tinted plates on foot may get hot while steam mop is in use. Do not touch while hot. Upright storage of the steam mop with a wet mop pad may result in the formation of white marks on your floor. To remove the white marks, clean area with vinegar.

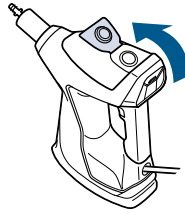
# Filling Your Easy Fill Water Tank

1



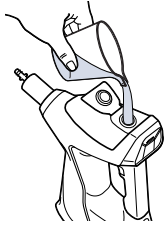
The water tank is located on the top of the handheld pod.

2



Pull the tank cap straight up to open.

3



Use water cup provided and fill with distilled or demineralized water, recommended in place of tap water. Close the tank cap after filling.

**NOTE: Use of distilled water or demineralized water is recommended to prolong the life of your steam mop.**

## A few notes about filling the Easy Fill Water Tank:

- The tank's capacity is 350 mL (12 oz).
- **Do not use chemicals in the water tank of your steam mop.**
- Other solutions may harm the machine and void the warranty.
- Never put descaling, alcoholic, eucalyptus oil, or detergent products into the steam cleaner, as this may damage it or make it unsafe for use.

# Attaching Microfibre Mop Pads

1

Your steam mop may have come with two different pads.



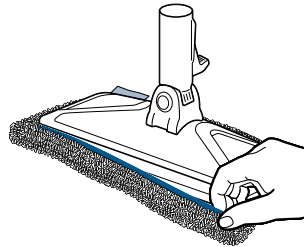
White Mop Pad



Scrubby Mop Pad

The **White Mop Pad** is best for everyday use on delicate flooring like sealed hardwoods and laminate. The **Scrubby Mop Pad** is recommended for durable surfaces like tile.

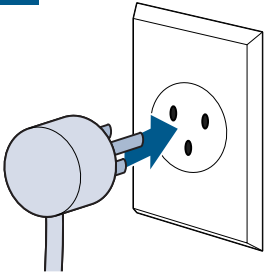
2



To attach mop pad, wrap it around the bottom of the foot, making sure the gray stitching is on the front of the foot and the quick grip release tab is on the back.

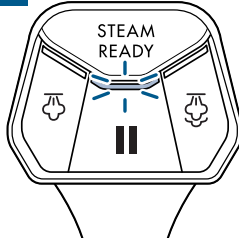
# Using SmartSet Steam Control

1



Plug machine into a properly grounded outlet.

2



When the machine is plugged in, the STEAM READY light will start to blink.

3



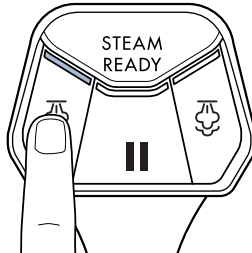
After 30 seconds, the STEAM READY light will turn to a solid light. This means the steam mop is heated and ready to use.

4

Now, select a desired steam level based on your cleaning needs.

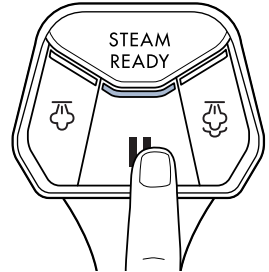


Push the HI STEAM button once to turn ON. Use HI STEAM when cleaning durable floors or sticky messes.



Push the LOW STEAM button once to turn ON. Use LOW STEAM for delicate floors or for light, everyday cleaning.

5



To turn steam OFF, press the PAUSE button once.

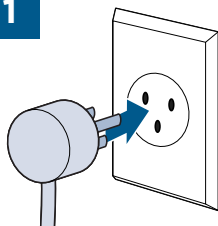
**NOTE:** You must wait until the STEAM READY light is a solid colour before selecting your desired steam level. Upon the first use of your steam mop or first use after refilling the water tank, the pump may make a “knocking” sound. This is normal and will diminish after a few seconds.

# Cleaning Your Hard Floors

**NOTE:** Thoroughly sweep or vacuum floor prior to cleaning with your steam mop.

**YOUR STEAM MOP IS DESIGNED TO CLEAN HARD FLOORING SUCH AS CERAMIC TILE, LAMINATE, MARBLE, STONE, AND SEALED HARDWOOD FLOORS. USE OF YOUR STEAM MOP ON WAXED OR SOME UNWAXED FLOORS MAY RESULT IN A DIMINISHED GLOSSINESS. THE STEAM MOP IS NOT FOR USE ON UNSEALED FLOORS. FOR BEST RESULTS, TEST IN AN INCONSPICUOUS AREA AND CHECK THE CARE INSTRUCTIONS FROM YOUR FLOORING MANUFACTURER. DON'T STAND STATIONARY AND KEEP THE MOP MOVING WHEN DISPENSING STEAM.**

1



Plug machine into a properly grounded outlet.

2



Make sure the STEAM READY light is solid before selecting the appropriate steam level based on your hard floor cleaning needs.

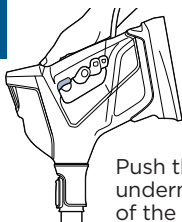
3



Step on the side of the foot to recline the body of the machine to begin cleaning.

**NOTE:** Your steam mop may have already come assembled with a mop pad on the foot. If not, refer to instructions on page 6 in the "Attaching Microfibre Mop Pads" section to learn how to attach the mop pad.

4



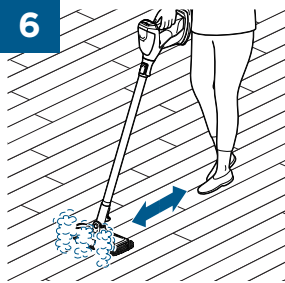
Push the trigger underneath the handle of the handheld pod to release steam.

5



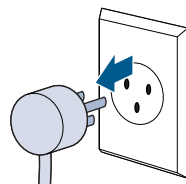
To easily manoeuvre and clean tight spaces such as baseboards, behind the toilet and around furniture, take advantage of the swivel steering.

6



For best results to sanitize an area of your floor, use the microfibre cloth pads and slowly and evenly move your steam mop back and forth at least three times over the area using continuous steam. Remove the pad after use and wash.

7



When finished cleaning, turn OFF the machine by pressing the PAUSE button and unplugging it

# Above Floor Cleaning

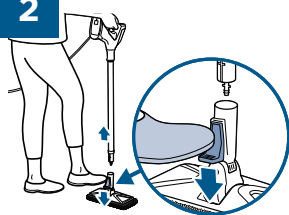
Your steam mop has the ability to clean above floors or in tight spaces when using the extension wand. It also has the convenience of converting into a handheld steamer when removing the extension wand.

1



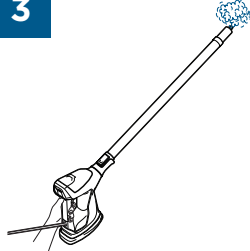
Wait 30 seconds before changing from mopping to the handheld feature or disconnecting a tool from the handheld pod or extension wand, make sure steam is no longer coming from the nozzle by releasing the trigger and pressing the PAUSE button.

2



To clean above floors using the **extension wand**, step down on the pedal located on the back of the steam mop and lift up to release.

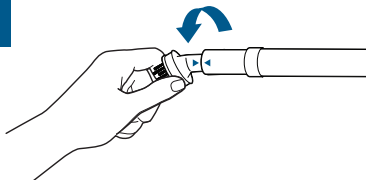
3



Be sure the desired steam setting is selected, then push the trigger located under the handle of the handheld pod to release steam.

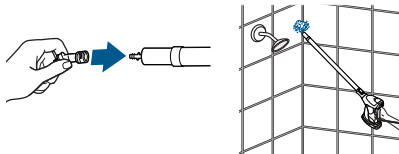
**NOTE:** Do not step on the back pedal to recline the steam mop. When removing the extension wand from the foot, make sure to lift away from your body as the bottom of the wand may release steam.

4



Align arrow on tool to arrow on end of nozzle (on extension wand or handheld steamer) and twist tool into place.

5



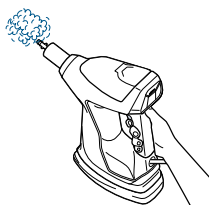
Attach desired tool to end of extension wand to clean above floors and hard-to-reach areas such as ceilings, showers, baseboards, and sliding door tracks.

6



To convert the steam mop into a **handheld steamer**, push the release button on top of the extension wand and lift up to detach the handheld pod from the extension wand.

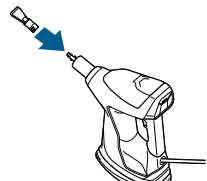
7



## Cleaning Without Tools:

Push the trigger under the handle of the handheld pod to release steam.

8

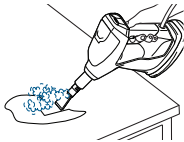


## Cleaning With Tools:

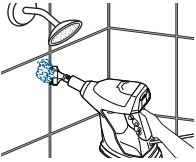
Make sure steam is no longer coming from the nozzle by releasing the trigger and pressing the PAUSE button. Then connect the desired tool.

# Above Floor Cleaning (continued)

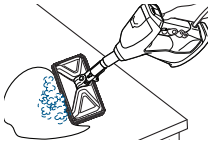
**9** Based on your cleaning needs, connect desired tool to the end of the extension wand or the handheld pod. Select cleaning tools are included with this model.



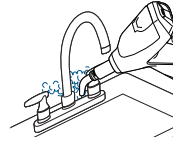
Use the **flat scraper tool** to steam and scrape off sticky messes on floors, countertops, etc.



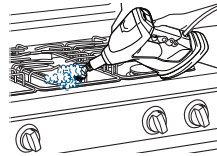
Use the **grout tool** to remove dirt and grime from grout.



Use the **mop pad foot** to steam larger areas such as shower walls, countertops, stairs, etc.



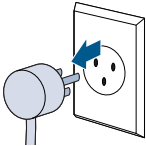
Use the **angle concentrator tool** to steam clean hard-to-reach corners and crevices where dirt and grime build-up, like sinks and faucets.



Use the **green bristle brush** to clean around stove tops, sinks, showers, etc.

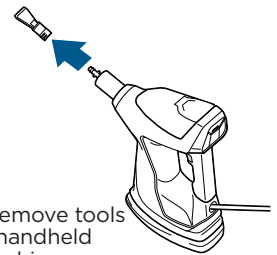
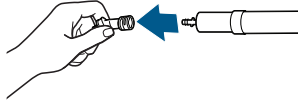
**NOTE:** Additional tools are available for purchase on [BISSELL.com.au](http://BISSELL.com.au).

**10**



When finished cleaning, turn OFF the machine by pressing the PAUSE button and unplug your steam mop.

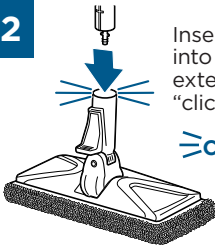
**11**



Wait for the steam to stop, then remove tools from the extension wand and/or handheld pod before reassembling your machine.

**CAUTION:** Let steam cool down before removing tools. The end of the extension wand or handheld pod will be hot.

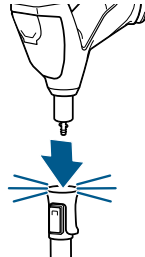
**12**



Insert foot back into the end of the extension wand until it "clicks" into place.

≡click≡

**13**



Then, insert the handheld pod back into the extension wand until it "clicks" into place.

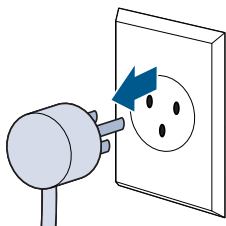
≡click≡

# Cleaning Your Steam Mop

## **⚠️ WARNING**

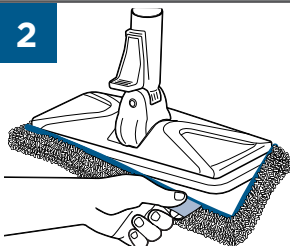
To reduce the risk of fire, electric shock or injury, turn power OFF and disconnect plug from electrical outlet before performing maintenance or troubleshooting.

1



Turn machine OFF and unplug from the grounded outlet.

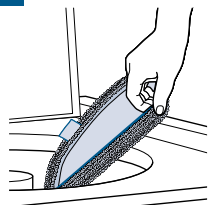
2



Carefully remove mop pad using the quick grip release tab from the mop head.

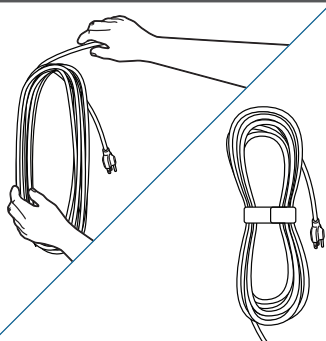
**NOTE:** Mop pad and lower assembly may be hot.

3



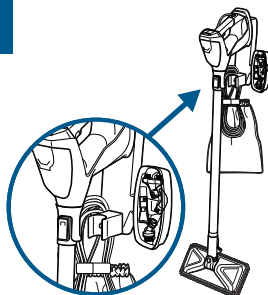
Mop pads can be machine washed in warm water. Use only non-bleach liquid detergents. Do not use fabric softeners or bleach. For best results, air dry.

4



Wrap the cable around the palm of your hand into a circle. Then, place the wrap strap around the cable and back onto itself to secure.

5



Store on the wall mount that is securely mounted in a protected, dry area. Store with dry mop pads as wet mop pads may damage wood and other delicate hard floors.

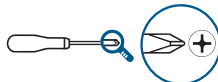
**NOTE:** Steam mop does not stand up on its own. If you are not using the wall mount, make sure your steam mop is stored in a safe place, in the upright position against a firm surface to prevent from falling over.

# Setting Up The Wall Mount

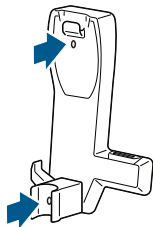
## **WARNING**

To reduce the risk of fire, electric shock or injury, turn power OFF and disconnect plug from electrical outlet before performing maintenance or troubleshooting.

A Phillips-head screwdriver is needed to install the wall mount. If installing onto drywall, use plastic anchors with provided screws.

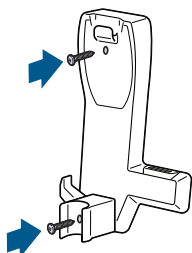


1



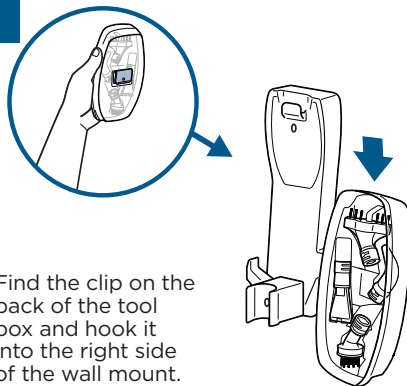
Place the wall mount against the wall in the area where you've determined you would like to store your machine.

2



Place each screw through the two holes in the wall mount. Use a screwdriver or drill to affix to the wall.

3



Find the clip on the back of the tool box and hook it into the right side of the wall mount.



# Using The Wall Mount Storage

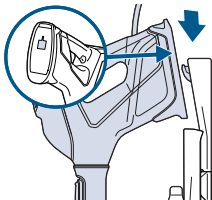
## **WARNING**

To reduce the risk of fire, electric shock or injury, turn power OFF and disconnect plug from electrical outlet before performing maintenance or troubleshooting.

Your steam mop can be stored in 2 different ways using the wall mount.

### OPTION 1:

1



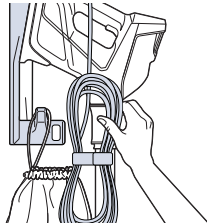
Find the opening on the back of the handheld pod and hook it onto the top lip of the wall mount.

2



Bend the mop pad foot downward in a slanted position.

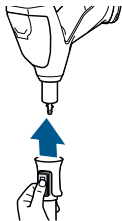
3



Hang the power cable and tool bag on the left-side hook.

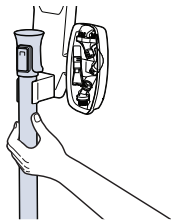
### OPTION 2:

1



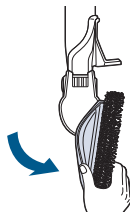
Detach the extension wand from handheld pod.

2



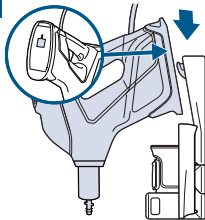
Clip the extension wand into the holder.

3



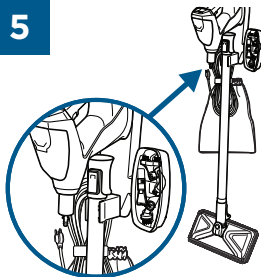
Bend the mop pad foot downward in a slanted position.

4



Find the opening on the back of the handheld pod and hook it onto the top lip of the wall mount.

5



Hang the power cable and tool bag on the left-side hook.

# Troubleshooting

## **WARNING**

To reduce the risk of electric shock, turn power switch OFF and disconnect plug from electrical outlet before performing maintenance or troubleshooting checks.

Problem	Possible Causes	Remedies
<b>Reduced steam OR no steam</b>	Water tank empty.	Refill tank.
	Steam level not selected.	Select steam level by pushing steam level button.
	Wand not installed properly.	Push the wand all the way into the handheld pod until you hear a “click”.
	Foot not installed properly.	Insert the extension wand into foot until you hear a “click”.
	PAUSE button is pressed.	Once STEAM READY light is solid, select desired steam level (HI or LO) then push the trigger under the handle of the handheld pod to release steam.
<b>Streaking</b>	Dirty mop pad.	Remove and wash mop pad per instructions before further use.
	Use on waxed or oiled floor.	If you have used floor polishes or wax on your floors, steam products may decrease glossiness. Refer to the wax or polish manufacturer. If you don't wax or polish your floors, check the floor care instructions from your flooring manufacturer.
<b>Leaking</b>	Mop pad is too wet.	Remove and replace with dry mop pad and intermittently press the steam trigger for less steam.
	Steam level is too high.	Lower the steam level.
	Crack in machine or water tank.	Check to see if there are any cracks on the machine or tank and check to make sure the rubber gasket on the tank is still attached and seated properly in the machine.
<b>Knocking noise</b>	First use or water tank is empty.	Fill tank and knocking will diminish after a few seconds.
	Metal tube cannot reach water.	Shake the pod to let the tube reach the water level.

# Warranty

This warranty gives you specific legal rights, in addition to rights you may have under the *Australian Consumer Law*. If you need additional instruction regarding this warranty or have questions regarding what it may cover, please contact your local BISSELL Consumer Care on the details set out below.

It may be necessary to obtain some of your personal information, such as a mailing address, to fulfill terms of this warranty. Any personal data will be handled pursuant to BISSELL's Privacy Policy, which can be found at [global.BISSELL.com/privacy-policy](http://global.BISSELL.com/privacy-policy).

## **BISSELL® Two-Year Warranty**

Subject to the \*conditions identified below, BISSELL will repair or replace (with new, refurbished, lightly used, or remanufactured components or products), at BISSELL's option, free of charge from the date of purchase by the original purchaser, for two years any defective or malfunctioning part due to manufacturer defect. This warranty applies to product used for personal purposes, and not commercial or rental service. This warranty does not apply to fans or routine maintenance or consumable components such as filters, belts, brush rolls, etc., damage or malfunction caused by negligence, abuse, neglect, unauthorized repair, or any other use not in accordance with the user guide. BISSELL recommends that the original packaging be kept for the duration of the warranty period in case such need arises within the warranty period that the item needs repacking and transportation.

## **\*CONDITIONS OF WARRANTY**

Subject to whether such loss is reasonably foreseeable, BISSELL and its in-country distributors are not liable for incidental or consequential damages of any nature associated with the use of this product.

This warranty is in addition to other rights or remedies under law. Nothing in this warranty excludes, limits or modifies any liability of BISSELL which is imposed by law, or limits or modifies any remedy available to the consumer which is granted by law. To make a claim under this warranty contact BISSELL Australia PTY LTD (details below). Contact BISSELL prior to returning any goods. Where agreed, BISSELL will reimburse reasonable postage / handling costs (if any) for returning goods to BISSELL. To claim expenses incurred in making a claim under this warranty please provide BISSELL with a copy of the receipt of the expenses by email or post.

**For Australian Consumers Only:** Our goods come with guarantees that cannot be excluded under the *Australian Consumer Law*. You are entitled to a replacement or refund for a major failure and compensation for any other reasonably foreseeable loss or damage. You are also entitled to have the goods repaired or replaced if the goods fail to be of acceptable quality and the failure does not amount to a major failure.

**NOTE:** Please keep your original sales receipt. It provides proof of the date of purchase in the event of a warranty claim. See warranty for details.

# Consumer Care

If your BISSELL product should require service or to claim under our limited warranty, please contact us as follows:

## **Australia**

Telephone: 1300 247 735

Website: [www.BISSELL.com.au](http://www.BISSELL.com.au)

## **New Zealand**

Telephone: 0800 247 735

Website: [www.BISSELL.co.nz](http://www.BISSELL.co.nz)



©2021 BISSELL Inc. All rights reserved.  
Part Number 1627027 03/21 RevB