

Bissell®

TURBOCLEAN PET

USER GUIDE
2069H



IMPORTANT SAFETY INSTRUCTIONS

READ ALL INSTRUCTIONS BEFORE USING YOUR APPLIANCE.

When using an electrical appliance, basic precautions should be observed, including the following:



WARNING

TO REDUCE THE RISK OF FIRE, ELECTRIC SHOCK OR INJURY:

- » This appliance is not intended for use by persons (including children) with reduced physical, sensory or mental capabilities, or lack of experience and knowledge, unless they have been given supervision or instruction concerning use of the appliance by a person responsible for their safety.
- » Children should be supervised to ensure that they do not play with the appliance.
- » Unplug from electrical socket when not in use, before cleaning, maintaining or servicing the appliance, and if your appliance has an accessory tool with a moving brush, before connecting or disconnecting the tool.
- » Do not immerse in water or liquid.
- » Keep hair, loose clothing, fingers, and all parts of body away from openings and moving parts of the appliance and its accessories.
- » If the supply cable is damaged, it must be replaced by the manufacturer, its service agent or similarly qualified person in order to avoid a hazard.
- » Do not run appliance over cable.
- » Do not use with damaged cable or plug.
- » Do not pull or carry by cable, use cable as a handle, close door on cable, or pull cable around sharp edges or corners.
- » Keep cable away from heated surfaces.
- » If the appliance has a handheld accessory like pet brush, motor driven head, etc., the user shall avoid entrapment.
- » Do not leave appliance when plugged in.
- » Do not immerse. Use only on surfaces moistened by the cleaning process. Use only BISSELL® cleaning products intended for use with this machine.
- » Use only the type and amount of liquids specified under the operations section of this guide.
- » Use only on carpet moistened by the cleaning process.
- » Liquid must not be directed towards equipment containing electrical components.
- » Always connect to a properly earthed electrical socket. Do not modify earthed plug.
- » Always install float before any wet pick-up operation.
- » To unplug, grasp the plug, not the cable.
- » Do not handle plug or appliance with wet hands.
- » Turn OFF all controls before unplugging.
- » Use indoor only.
- » Plastic film can be dangerous. To avoid danger of suffocation, keep away from children.
- » Use only as described in this user guide.
- » Use only manufacturer's recommended attachments.
- » If appliance is not working as it should, has been dropped, damaged, left outdoors, or dropped into water; do not attempt to operate it and have it repaired at an authorised service center.
- » Do not put any object into openings.
- » Do not use with any opening blocked; keep free of dust, lint, hair, and anything that may reduce air flow.
- » Use extra care when cleaning on stairs.
- » Do not use to pick up flammable or combustible liquids, such as petroleum, or use in areas where they may be present.
- » Do not pick up toxic material (chlorine bleach, ammonia, drain cleaner, etc.).
- » Do not use appliance in an enclosed space filled with vapours given off by oil-based paint, paint thinner, some moth-proofing substances, flammable dust, or other explosive or toxic vapours.
- » Do not pick up hard or sharp objects such as glass, nails, screws, coins, etc.
- » Do not pick up anything that is burning or smoking, such as cigarettes, matches or hot ashes.
- » Do not use without filters in place.

SAVE THESE INSTRUCTIONS

ORIGINAL INSTRUCTIONS.

FOR OPERATION ON A 220-240 VOLT A.C. 50-60 HZ POWER SUPPLY ONLY.

THIS MODEL IS FOR HOUSEHOLD USE ONLY.

IMPORTANT INFORMATION

- » Keep appliance on a level surface.
- » If your appliance has a motorised Brush Roll, do not leave machine running in the same spot without the handle fully upright.
- » To reduce the risk of a leaking condition, do not store machine where freezing may occur. Damage to internal components may result.


Thanks for buying a BISSELL® carpet washer

We love to clean and we're excited to share one of our innovative products with you. We want your carpet washer to work like new for the years to come, so this guide has tips on how to use, maintain, and if there's a problem, troubleshoot. Your carpet washer needs a little assembly before getting to work, so flip to the "Assembly" section and let's get started!

- Safety Instructions 2
- Product View 4
- Cleaning Formulas 5
- Assembly 6
- Operations 7-10
- Maintenance & Care 10
- Troubleshooting 11
- Guarantee 12
- Consumer Care 12

TIPS

- » Washing stairs and high-traffic areas on a regular basis helps prolong carpet life.
- » Washing carpeting regularly can reduce dust and allergens in your home.

	WARNING	AN ACTION OR ATTENTION IS NEEDED TO THIS AREA IN ORDER TO REDUCE THE RISK OF ELECTRIC SHOCK, FIRE OR INJURY
	GUIDE	READ USER GUIDE FOR COMPLETE SAFETY AND USER INSTRUCTIONS

Product View

- 1 Spray Trigger
- 2 Quick Release Cable Wrap
- 3 Tough Stain Tool
- 4 Hose Wrap
- 5 Handle Assembly
- 6 Power Cable
- 7 Hose
- 8 Upper Body
- 9 ReadyTools Dial
- 10 Dirty Water Tank
- 11 Vent Cover (Foam Filter)
- 12 Dirty Water Tank Latch
- 13 Removable Nozzle



Cleaning Formulas

Keep plenty of BISSELL® formulas on hand so you can clean whenever it fits your schedule. Always use genuine BISSELL formulas in your machine. Other formulas may harm the machine and void the guarantee. Do not use Wash & Shine Hard Floor Formula on area rugs or carpet.

Pretreat

Pretreat spots and stains to improve cleaning performance.

	
Stain Pretreat Loosens set-in stains & odours before carpet washing.	Pet Stain Pretreat Loosens tough pet stains & odours before carpet washing.

Boost


Add to any formula to increase its effectiveness.



Oxy Boost Add to formula for permanent stain removal.

⚠️ WARNING

To reduce the risk of fire and electric shock due to internal component damage, use only BISSELL formula intended for use with this machine. Use of cleaning formulas that contain eucalyptus, lemon or pine oil may damage this appliance and void the guarantee. Chemical spot cleaners or solvent-based soil removers should not be used. These products may react with the plastic materials used in your carpet washer causing cracking or pitting.

Carpet Cleaning Formulas

Wash & Protect			Wash & Refresh
			
Pro Stain & Odour Professional strength to remove extra tough stains and odours.	Pet Stain & Odour Removes tough pet stains and odours.	Stain & Odour Removes tough stains and odours.	Ambipur Blossom & Breeze Powerful cleaning with a refreshing spring scent.

Wash & Remove	Wash & Shine	
		
Pro Pet Urine Eliminator + Oxy Permanently removes stains and odors at the source with the power of Oxy.	Allergen Helps remove pet dander, pollen and dust mite waste allergens.	Hard Floor Cleaner Removes tough dirt & grime and leaves a natural shine. Do not use on area rugs or carpet.

Certain trademarks used under license from The Procter & Gamble Company or its affiliates.

Assembly

The machine assembles quickly and easily. The only tool you will need for assembly is a Phillips-head screwdriver.

1. Slide Upper Body onto lower body.

2. Secure with screws.

NOTE: The screws can be found taped to the handle.

3. Attach Hose Wrap to upper handle by sliding it up the bottom of the handle until it snaps firmly in place.

4. Slide upper handle into Upper Body, until it will not go any farther and secure with screw.

5. Place Clean Water Tank on back of machine.

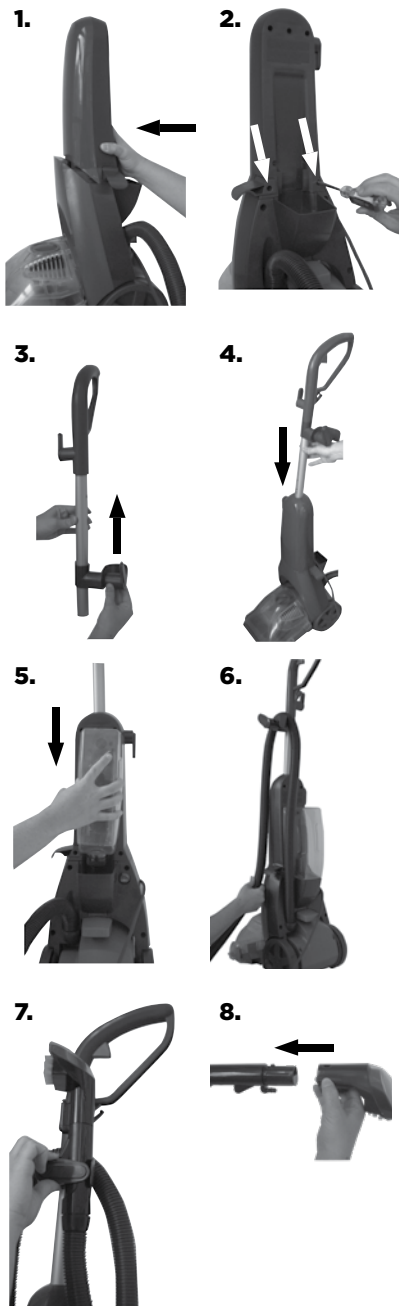
6. Wrap Power Cable and flex hose.

7. Keep flex hose snugly in place by using the Hose secure latch.

8. Attach tool to end of hose.

Assembly is now complete.

⚠ WARNING
Do not plug in the machine until you have completely assembled it per the instructions and are familiar with all instructions and operating procedures.



Operations

Special Features

Your BISSELL® washer is a home cleaning system that uses a combination of warm tap water, BISSELL cleaning formula, brush agitation and suction to safely clean carpets.

DirtLifter PowerBrush

The DirtLifter PowerBrush is designed to enhance cleaning performance. The bristle pattern safely lifts out dirt while gently grooming carpet fibers. When the power is ON and the machine is in the upright position, your carpet is protected because the brush motor is turned off.

ReadyTools Dial

The ReadyTools feature allows you to choose between FLOOR CLEANING or cleaning with TOOLS simply by turning the dial. The TOOLS setting allows for above floor cleaning of upholstery, stairs, creases along baseboards, and other hard-to-reach areas. Simply choose the tool that is appropriate for the job, attach to flex hose, and you are ready to go.

Before You Clean

1. Move furniture to another area if cleaning an entire room. (Optional)
2. Remove loose dirt and impediments before cleaning.
3. Plan your cleaning route to leave an exit path. It is best to begin cleaning in the corner farthest from your exit.
4. Pretreat stubborn stains and highly soiled carpet in hallways and other high-traffic areas. (Optional) Pretreat formula not included.

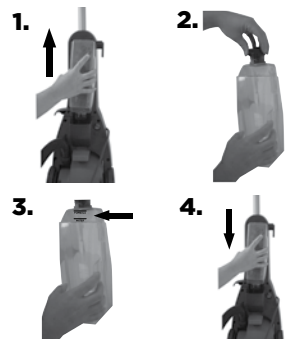
4a. Generously spray BISSELL Stain Pretreat evenly over soiled area. **Caution: DO NOT OVERWET CARPET**

4b. Wait 3-5 minutes before deep cleaning.



Fill the Tank

1. Remove the Clean Water Tank by lifting it straight up, then away from the lower body.
2. Unscrew the black cap at the bottom of the Clean Water Tank.
3. Fill with warm (60°C/140°F MAX) tap water to the WATER line. Fill the rest of the tank with BISSELL Formula to the FORMULA line. Replace and tighten the black cap. NOTE: Do not boil or microwave water as it can damage the Clean Water Tank.
4. Replace the full Clean Water Tank onto the lower body.



⚠️ WARNING

To reduce the risk of fire, use only BISSELL cleaning formula for full-size machines in your washer. Use of cleaning formulas that contain lemon, eucalyptus or pine oil may damage this appliance and may void the guarantee. Chemical spot cleaners or solvent-based soil removers should not be used. These products may react with the plastic materials used in your washer causing cracking or pitting.

Operations

Carpet Cleaning

1. Set ReadyTools dial to "FLOOR CLEANING".
2. Plug into proper outlet.
3. Turn the power switch to the ON (I) position (located on the back of machine).
4. With foot, press the red recline lever (located on the back of machine).
5. Cleaning Strokes: While pressing the Spray Trigger, make one slow forward wet pass and another one back. **Caution: Do not overwet.**
6. Release the Spray Trigger and make one slow forward and backward pass over the same area.
7. Repeat steps 5 and 6 until formula being pulled up appears clean.
8. Empty the Dirty Water Tank when dirty water reaches the full line, or when the Clean Water Tank is empty.

1.



3. & 4. Power



Hard Floor Cleaning (select models only)

1. Turn OFF and unplug the machine.
2. Remove the Dirty Water Tank (refer to step 2 on page 8).
3. Attach the hard floor tool by hooking it into the front of the Removable Nozzle and rotate until it snaps firmly in place.
4. Fill the Clean Water Tank with warm tap water to the WATER fill line. Fill with BISSELL® Wash & Shine Hard Floor Formula to FORMULA fill line.
5. Replace the Dirty Water Tank. Be sure to attach the two latches.
6. Plug the machine in to a proper outlet.
7. Follow steps 1-8 under "Carpet Cleaning" at the top of this page to continue cleaning.

Empty the Dirty Water Tank

1. Turn power switch OFF (O) and unplug Power Cable from outlet.
2. Remove the Dirty Water Tank from base of machine.
 - 2a. Release Dirty Water Tank Latches (on each side) by pulling up from the bottom of latch and then out.
 - 2b. Carefully remove the top of the tank by lifting up on the tank handle.
3. Carry Dirty Water Tank to a toilet or sink. To empty, pour out contents using opening at back of tank.
4. Rinse Dirty Water Tank thoroughly and replace on machine.
5. Refill Clean Water Tank and continue cleaning.

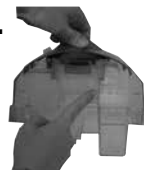
2a.



2b.



3.



Operations

Cleaning with Attachments

Your cleaner is equipped with a Hose and one attachment for cleaning stairs, upholstery and more. When the power is ON and the machine is in the upright position, your carpet is protected because the brush is elevated above the carpet (take care if long fibre carpet or mats are in proximity).

1. Important! If using to clean upholstery, check upholstery tags.

1a. Check manufacturer's tag before cleaning. Do not use on velvet or silk. If manufacturer's tag is missing or not coded, check with your furniture dealer.

1b. Check for colourfastness in an inconspicuous place.

1c. If possible, check upholstery stuffing. Coloured stuffing may bleed through fabric when wet.

1d. Plan activities to allow upholstery time to dry.

1e. Remove loose dirt and impediments.

2. Follow the instructions on page 7 for filling the tank.

3. Set the ReadyTools dial to the "TOOLS" setting.

4. Attach the cleaning tool to the end of the hose.

5. Plug in and turn the power switch to the ON position.

6. Clean by pressing the Spray Trigger to spray formula onto the area to be cleaned. Slowly move the tool back and forth over the soiled surface. Release the Spray Trigger to suction dirty water. Continue to clean in the area, working in small sections, until dirt is removed.

Caution: Do Not Overwet.

7. When finished cleaning, remove and rinse tool(s) in clean, running water.

8. It is recommended that you suction clean water from a bowl or from the tap to rinse out the Hose.

9. Lift end of Hose and stretch out to ensure all water is cleared.

10. Wrap Hose around Hose Wrap.

11. Empty Dirty Water Tank and rinse out, following instructions on page 10 under "Cleaning After Use".

12. Return ReadyTools Dial to "FLOOR CLEANING" setting.

IMPORTANT INFORMATION

- » Keep appliance on a level surface.
- » If your appliance has a motorised Brush Roll, do not leave machine running in the same spot without the handle fully upright.
- » To reduce the risk of a leaking condition, do not store machine where freezing may occur. Damage to internal components may result.

3.



4.



8.



9.



Operations

Cleaning After Use

1. Unplug the machine.
2. Rinse Dirty Water Tank thoroughly.
 - 2a. Remove ReadyTools Dial by rotating it halfway between "TOOLS" & "FLOOR CLEANING".
 - 2b. Pop out knob by using the opening on the back of the tank. Rinse and replace knob and Dirty Water Tank.
3. Remove tank vent & foam filter (located on top of the Dirty Water Tank) and rinse.
4. Clean nozzle window by lifting latch and removing from machine. Rinse under running water.
5. When finished, replace nozzle and secure with latch.

NOTE: For best results, it is recommended that the nozzle is cleaned after each use.

6. Remove lint and hair from red gasket in base of machine. **(Do not remove gasket.)**
7. Replace the Dirty Water Tank to the base of the machine and secure with latches.



Maintenance & Care

Machine Storage

For best results, a few simple steps can assure your machine is well maintained after your cleaning is complete.

1. Wrap Power Cable around Quick Release Cable Wrap on side of the machine.
2. Wipe all surfaces with a soft cloth. Store machine upright in a protected, dry area.

NOTE: You may have cleaning formula remaining in the Clean Water Tank. You may store your machine this way for the next cleaning task, but never keep dirty water in the Dirty Water Tank.

⚠️ WARNING

To reduce the risk of electric shock, push power switch
Ⓜ OFF and disconnect plug from electrical outlet before performing maintenance or troubleshooting checks.

⚠️ CAUTION

Do not store machine where freezing may occur.
Damage to internal components may result.

Troubleshooting

WARNING

To reduce the risk of electric shock, push power switch
 Ⓛ OFF and disconnect plug from electrical outlet before performing maintenance or troubleshooting checks.

Problem	Possible Causes	Remedies
Reduced spray OR no spray in upright mode	Clean Water Tank empty.	Refill tank with water and formula.
	Lint screen on Clean Water Tank cap clogged.	Soak cap in warm water and then rinse under running water.
	Upper Body not attached properly.	Repeat steps 1-4 on page 6.
Reduced spray or no spray from attachment	Clean Water Tank empty.	Refill tank with water and formula.
	Spray nozzle clogged.	Clean spray nozzle by rinsing tool under water.
	Pump needs priming.	Place tool on floor and press Spray Trigger.
	Machine is reclined.	Return machine to full upright position until it locks into place.
	ReadyTools Dial is set to "FLOOR CLEANING".	Choose "TOOLS" setting on ReadyTools Dial.
Machine not picking up cleaning formula	Dirty Water Tank not aligned/secured.	Check tank alignment and secure with side latches.
	Dirty Water Tank full.	Empty tank.
	Removable Nozzle installed improperly.	Unplug machine. Align four "hooks" into bottom first, then snap into place on top.
	Removable nozzle full of debris.	Unplug machine. Remove nozzle and rinse under running water.
	Red lint screen under Dirty Water Tank clogged.	Remove debris from lint screen.
	ReadyTools Dial not set properly.	Choose either "FLOOR CLEANING" or "TOOLS" for desired cleaning method.
Brush not turning	Handle not reclined.	Press the red recline lever on the back of the machine to activate the brush. Follow step 4 under "Carpet Cleaning" on page 8.

Consumer Guarantee

This guarantee gives you specific legal rights, in addition to rights you may have under the Australian Consumer Law. If you need additional instruction regarding this Guarantee or have questions regarding what it may cover, please contact your local BISSELL® Consumer Services on the details set out below.

Limited 2 Year Guarantee (from the date of purchase by original purchaser)

Subject to the *CONDITIONS identified below, BISSELL will repair or replace (with new, refurbished, lightly used, or remanufactured components or products), at BISSELL's option, free of charge, any defective or malfunctioning part due to manufacturer defect. This guarantee applies to product used for personal purposes, and not commercial or rental service. This guarantee does not apply to fans or routine maintenance or consumable components such as filters, belts, brush rolls, etc., damage or malfunction caused by negligence, abuse, neglect, unauthorised repair, or any other use not in accordance with the user guide. BISSELL recommends that the original packaging be kept for the duration of the guarantee period in case such need arises within the guarantee period that the item needs re-packing and transportation.

It may be necessary to obtain some of your personal information, such as a mailing address, to fulfill terms of this guarantee. Any personal data will be handled pursuant to BISSELL's Privacy Policy, which can be found at bissell.com.

*CONDITIONS OF THE GUARANTEE

Subject to whether such loss is reasonably foreseeable, BISSELL and its in-country distributors are not liable for incidental or consequential damages of any nature associated with the use of this product.

FOR AUSTRALIAN CONSUMERS ONLY:

OUR GOODS COME WITH GUARANTEES THAT CANNOT BE EXCLUDED UNDER THE AUSTRALIAN CONSUMER LAW. YOU ARE ENTITLED TO A REPLACEMENT OR REFUND FOR A MAJOR FAILURE AND FOR COMPENSATION FOR ANY OTHER REASONABLY FORESEEABLE LOSS OR DAMAGE. YOU ARE ALSO ENTITLED TO HAVE THE GOODS REPAIRED OR REPLACED IF THE GOODS FAIL TO BE OF ACCEPTABLE QUALITY AND THE FAILURE DOES NOT AMOUNT TO A MAJOR FAILURE.

THIS GUARANTEE IS IN ADDITION TO OTHER RIGHTS OR REMEDIES UNDER LAW. NOTHING IN THIS GUARANTEE EXCLUDES, LIMITS OR MODIFIES ANY LIABILITY OF BISSELL WHICH IS IMPOSED BY LAW, OR LIMITS OR MODIFIES ANY REMEDY AVAILABLE TO THE CONSUMER WHICH IS GRANTED BY LAW. TO MAKE A CLAIM UNDER THIS GUARANTEE CONTACT BISSELL AUSTRALIA PTY LTD (DETAILS ABOVE). CONTACT BISSELL PRIOR TO RETURNING ANY GOODS. WHERE AGREED, BISSELL WILL REIMBURSE REASONABLE POSTAGE / HANDLING COSTS (IF ANY) FOR RETURNING GOODS TO BISSELL. TO CLAIM EXPENSES INCURRED IN MAKING A CLAIM UNDER THIS GUARANTEE PLEASE PROVIDE BISSELL WITH A COPY OF THE RECEIPT OF THE EXPENSES BY EMAIL OR POST.

Consumer Care

If your BISSELL® product should require service or to claim under our limited guarantee, please contact us as follows:

Website and Email:

www.bissell.com.au
www.bissell.co.nz

Telephone:

Australia: 1300-247-735
New Zealand: 0800-247-735

Write:

BISSELL AUSTRALIA PTY LIMITED
42 Rocco Dr.
Scoresby 3179
Victoria
Australia

Replacement parts and accessories are available for purchase.
To purchase visit BISSELL.com.

Visit the BISSELL website: BISSELL.com

When contacting BISSELL, have model number of cleaner available.

Please record your Model Number: _____

Please record your Purchase Date: _____

NOTE: Please keep your original sales receipt. It provides proof of the date of purchase in the event of a guarantee claim. See guarantee for details.



©2020 BISSELL Inc
All rights reserved. Printed in China
Part Number 1623133 01/20 RevC